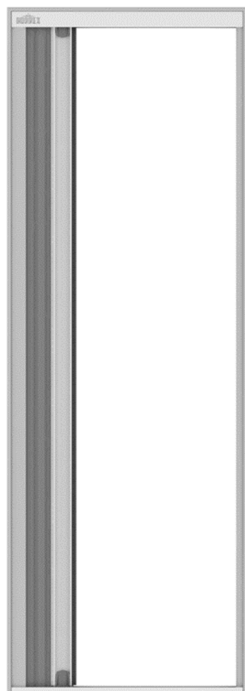




Fly screen door
Cord Replacement
Manual





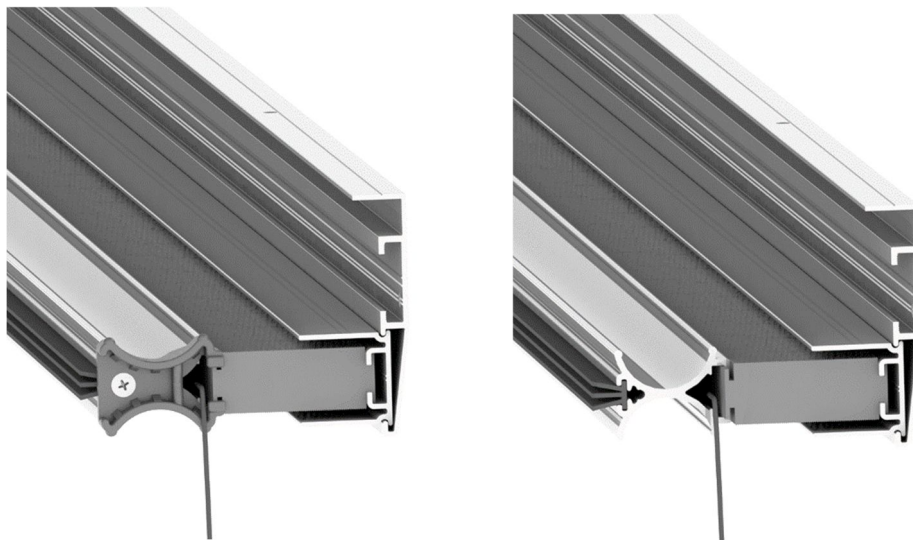
Contents

- Cord 12m
- 2 Cord tensioners
- 2 Cord connectors

Items needed

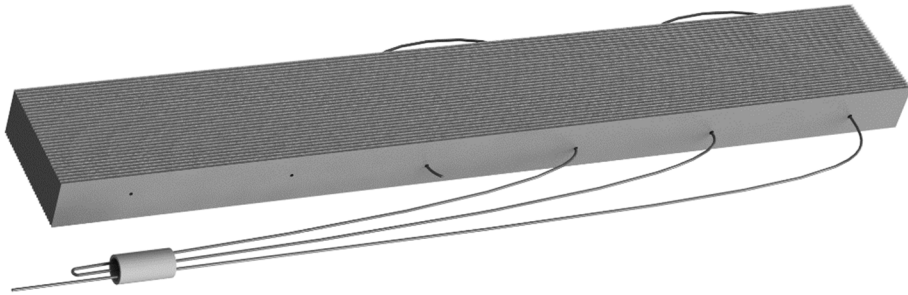
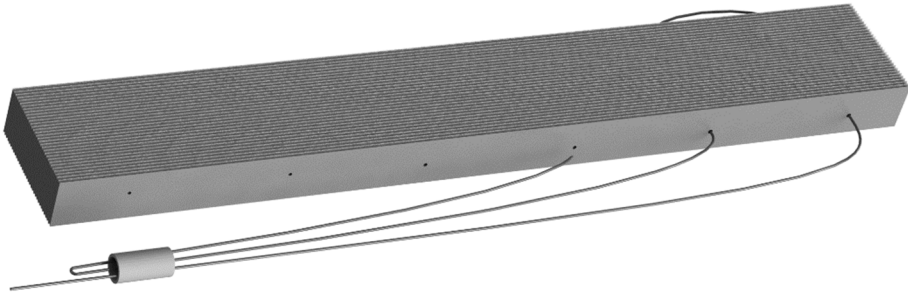
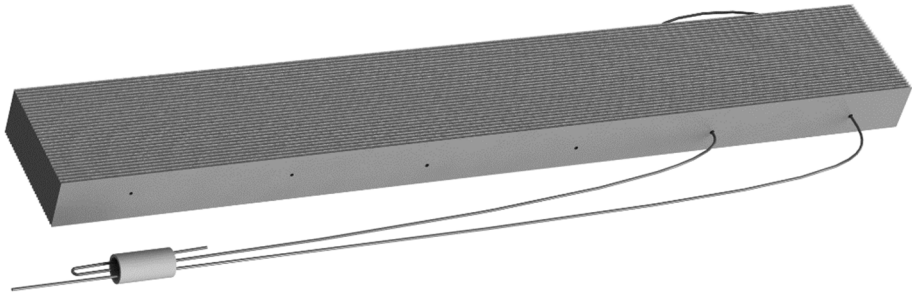
- Screwdriver (PH2)
- Needle
- Pliers
- Allen key 2,5mm

- 1 Remove the cord tensioners from the side profiles.
Remove the bottom plastic piece from the pullbar.
Slide the mesh pack out of the pullbar and side profile.

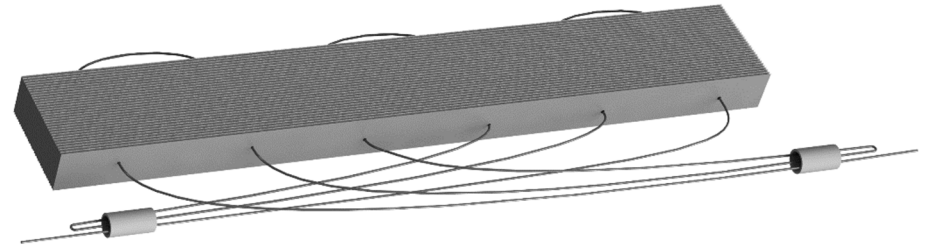
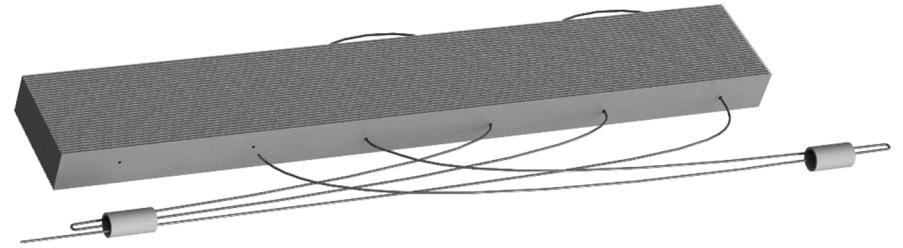
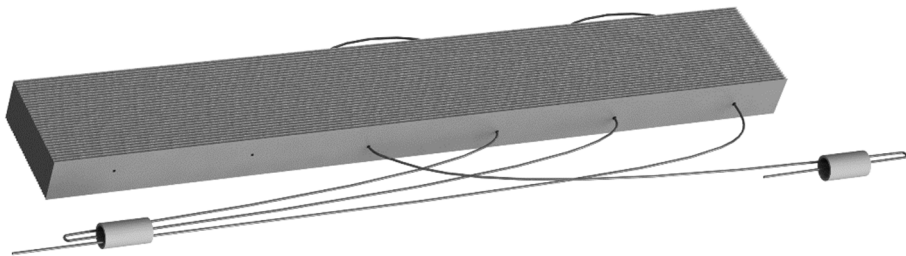


- 2 Remove the tape and broken cord from the mesh pack.
- 3 Attach one cord connector and a needle to the cord and sew the cord through the mesh pack as shown.

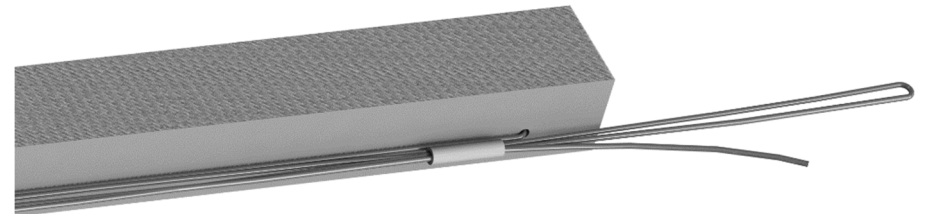




4 Make a loop and place the cord connector.

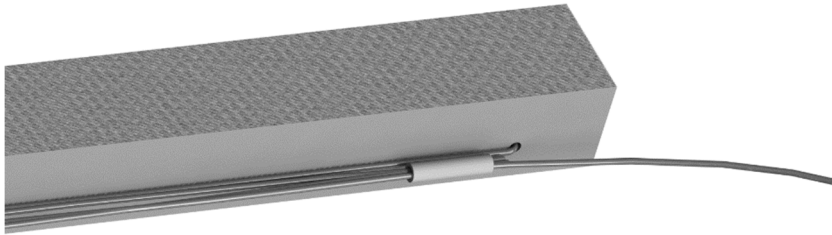


5 Pull on the cords so they are all tight when the cord connector is placed against the mesh pack at the last hole on both sides.

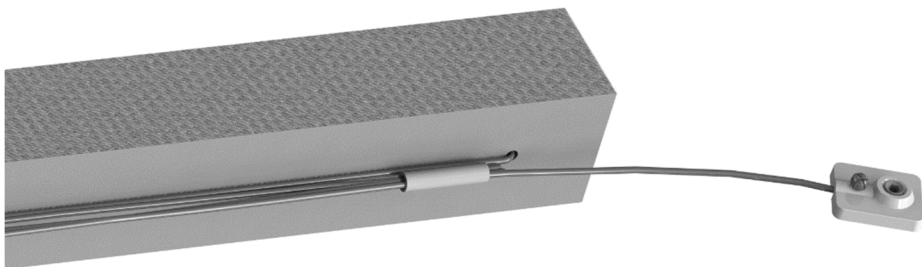




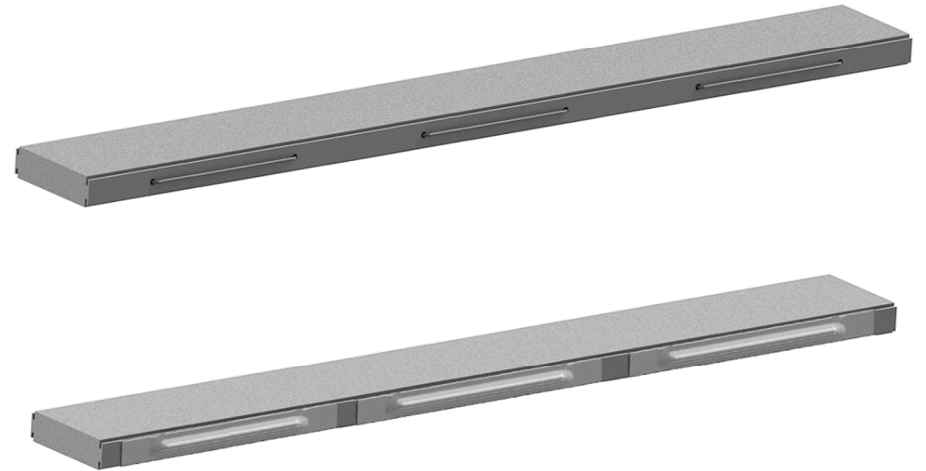
- 6 When all cords are tight, clamp the cord connectors to the 3 cords using pliers and cut of the loop. Do this for both sides.



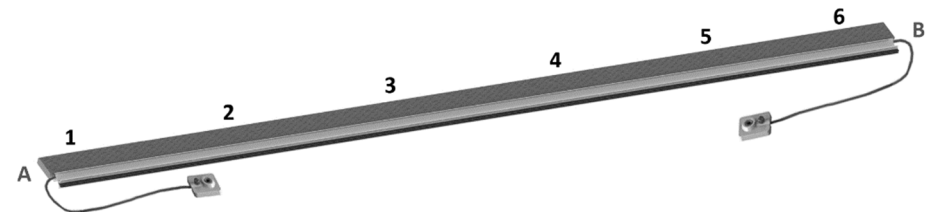
- 7 Place the cord tensioner on the end of the cord and secure it with a knot. Do this for both sides.



- 8 Place tape on the back of the mesh pack to insure the cord stays in position.

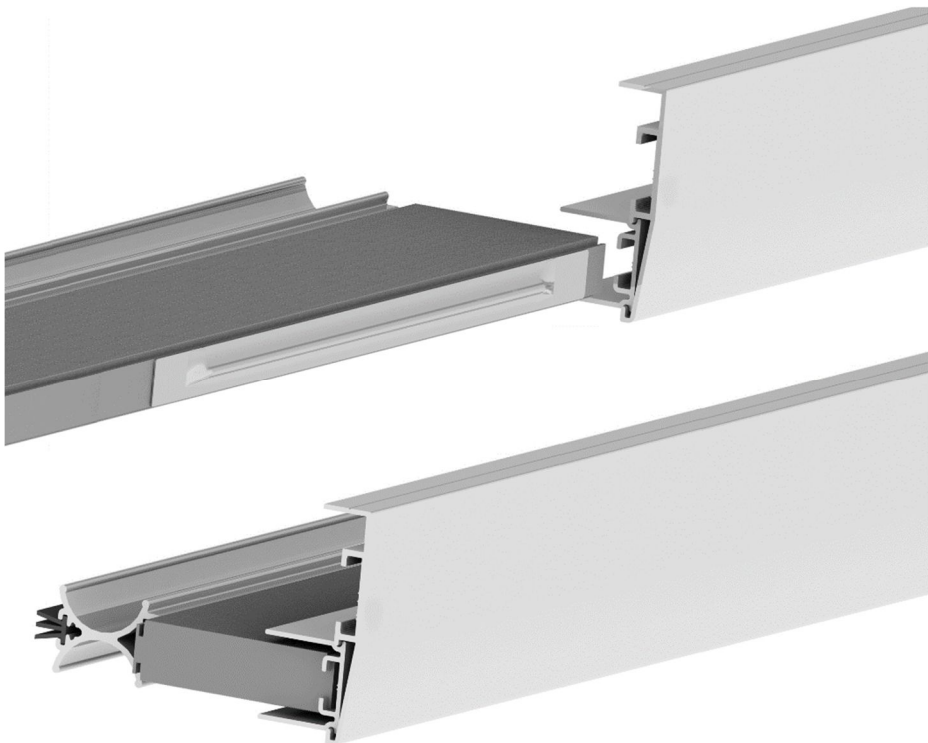


- 9 Slide the mesh pack back into the pullbar. Make sure the cords that go through hole 1,2,3 come out at side B and cords that go through hole 4,5,6 come out at side A

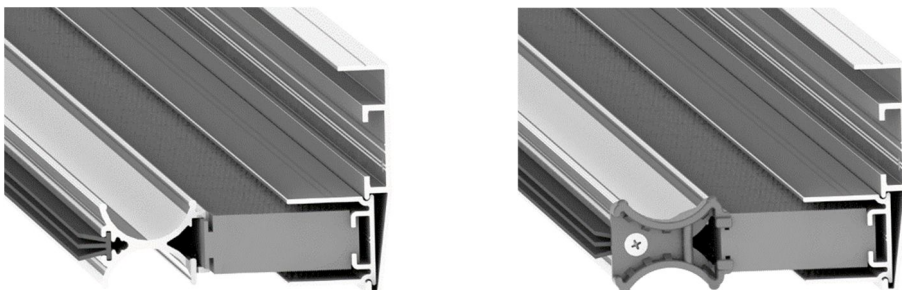




- 10** Slide the mesh pack back into the side profile. Make sure the side where the cord goes through the mesh pack close to the edge is on the bottom of the door.



- 11** Reattach the plastic bottom piece.



- 12** Place the cord tensioner in the side profile and put the cord under tension. Do this for both cord tensioners.

