

Service bulletin P304_2021_N01

Recipient: To whom it may concern.

Date: December 16th, 2021.

Which models: All steps with code 10572/10574/10575/10576/10577.

Description: The purpose of this document is to present and describe the procedures for the replacement of conical pins used within the steps of the series mentioned above.

PROCEDURE TO REPLACE CONICAL PINS INSIDE THE STEP WITH M4X30 SCREWS

if necessary, conical pins highlighted in figure 1A shall be replaced with screws ISO4762 M4x30 CI 12.9 and nuts Conelock M4 ISO 7042. Both components require Magni treatment (Datasheet available on request). LCI spare parts are available P/N 2020339977.

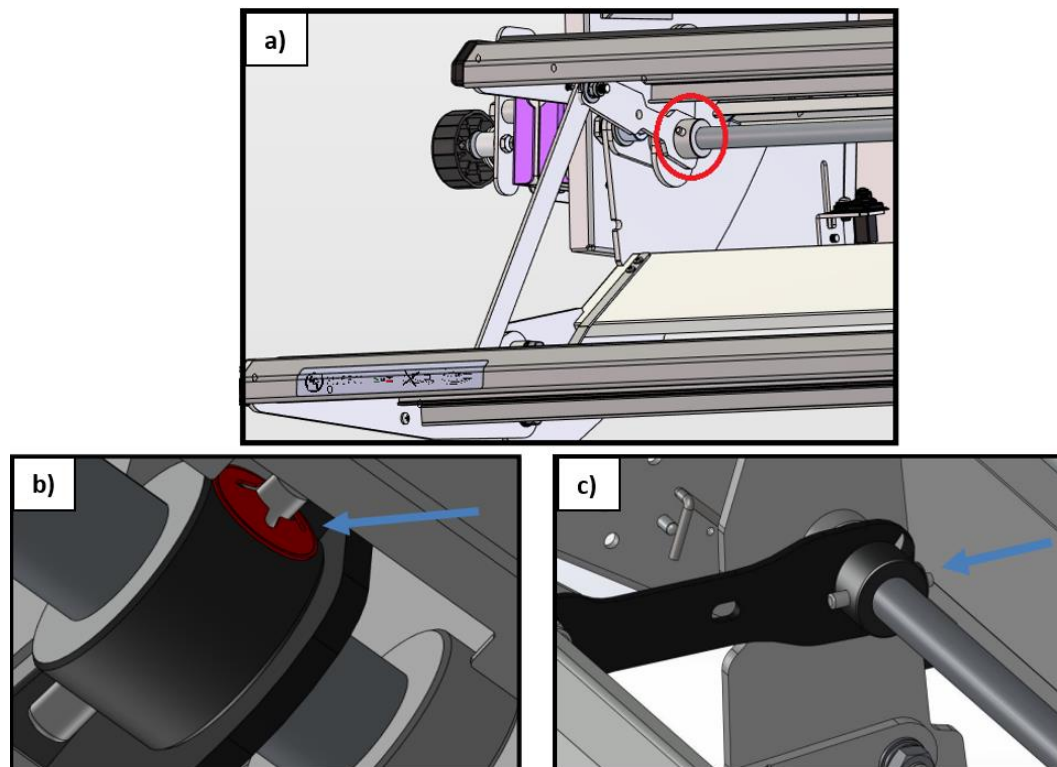


Figure 1 –Conical pins on internal rod.

Here below replacement steps:

1. Unscrew the knob for the manual release of the step and remove its grommet;

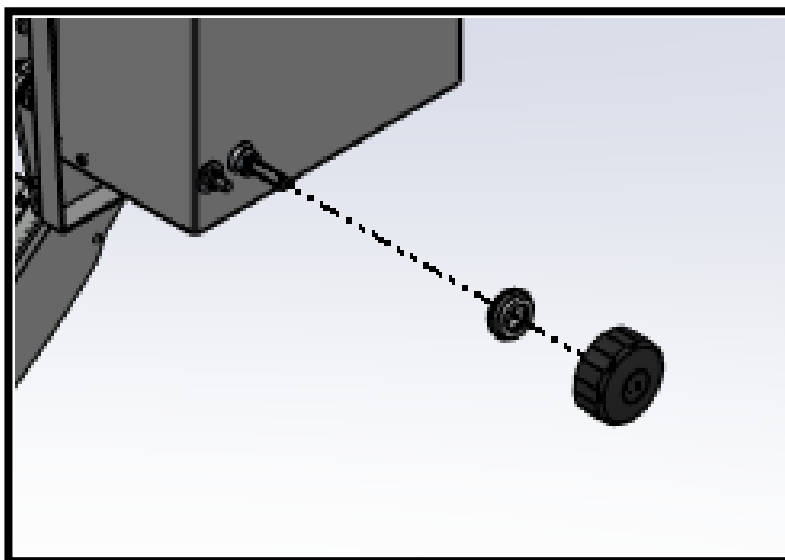
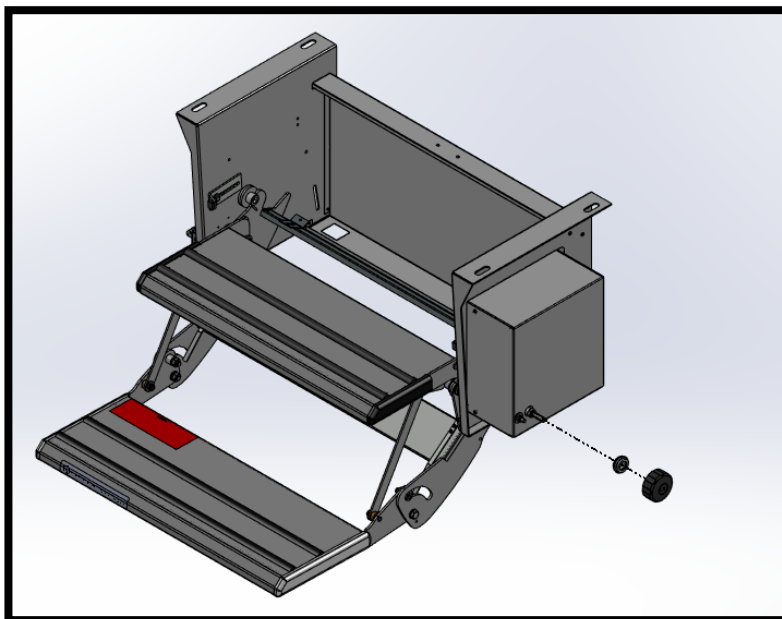


Figure 2 – Disassembly of manual step release knob.

2. Disassemble two M6 nuts of the motor box;

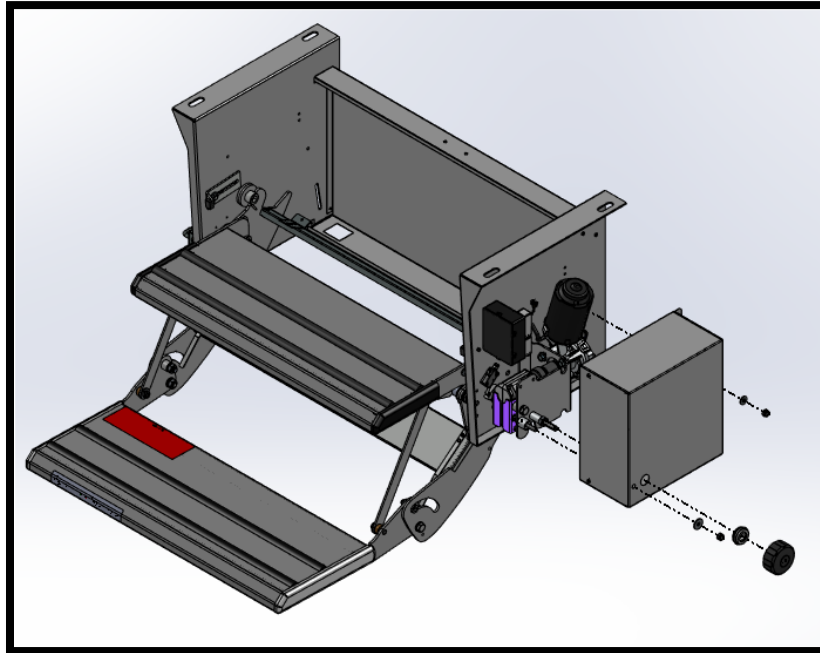


Figure 3 – Disassembly motor box.

3. Tighten the M8 nut, highlighted in figure 4, until the motor is disengaged from the coupler (figure 5);

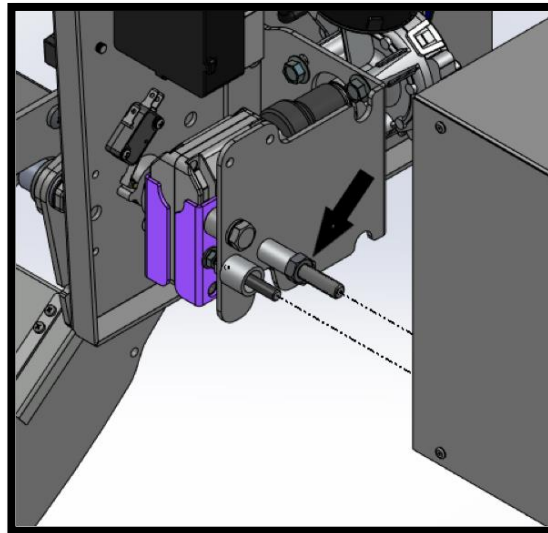


Figure 4 – M8 nut that keeps motor engaged.

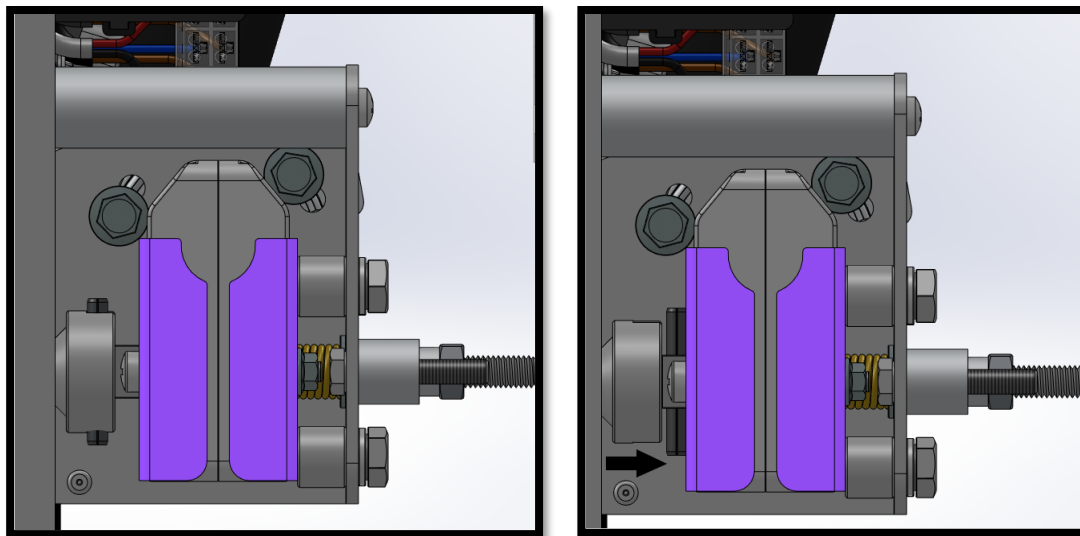


Figure 5 – Motor engaged on the left and disengaged on the right.

4. Check pins holes, removing dirt or residues.
5. Rotate the rod, keeping step extended, match in holes of bushings with holes of the rod (Figure 6);

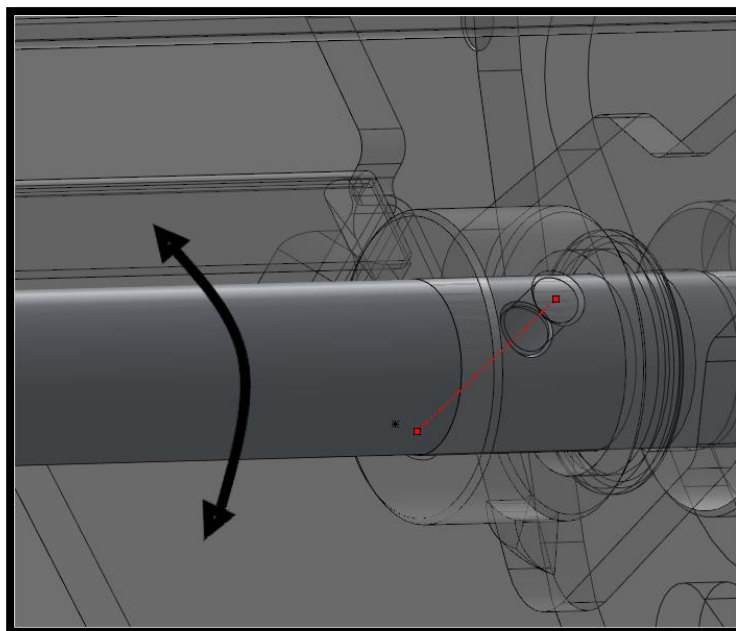


Figure 6 – Alignment of bushings/rod holes.

6. Before installation of M4x30 screws and their nuts, keeping step extended, check if the cam is positioned as per image below (microswitch shall be pushed) otherwise repeat the procedure described in point 5. until both alignment of the holes (bushing-rod) and correct position of the cam are obtained.

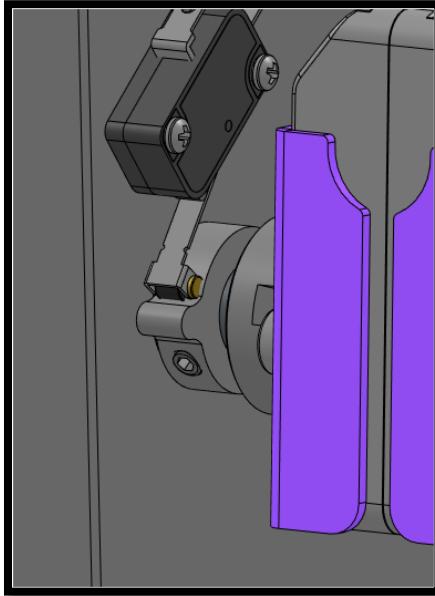


Figure 7– Correct position of the cam considering step extended.

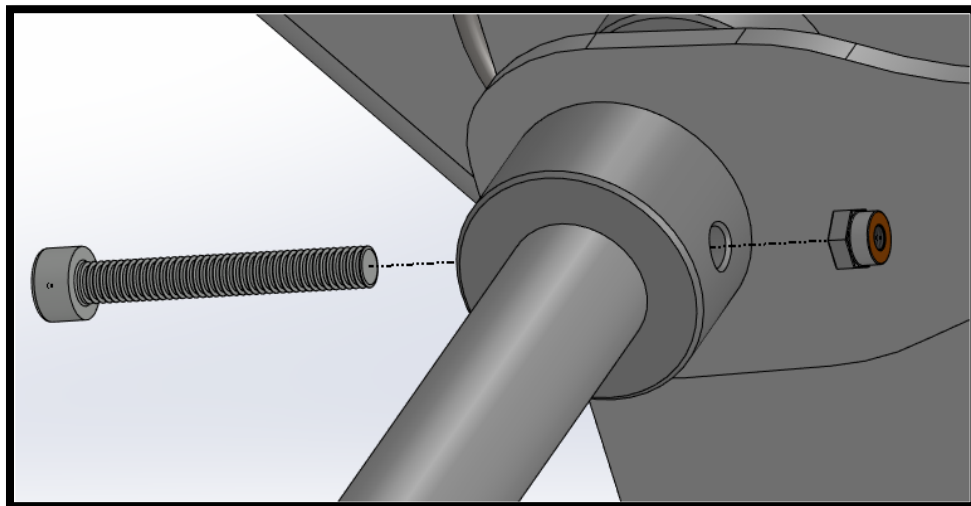


Figure 8- Installation M4x30 screw and M4 nut.

DESCRIPTION: PROCEDURE TO REPLACE THE ELASTIC PIN CONNECTED TO THE MOTOR

If elastic pins shall be replaced (figure 9), please check procedure described in points 1, 2, 3 and 4

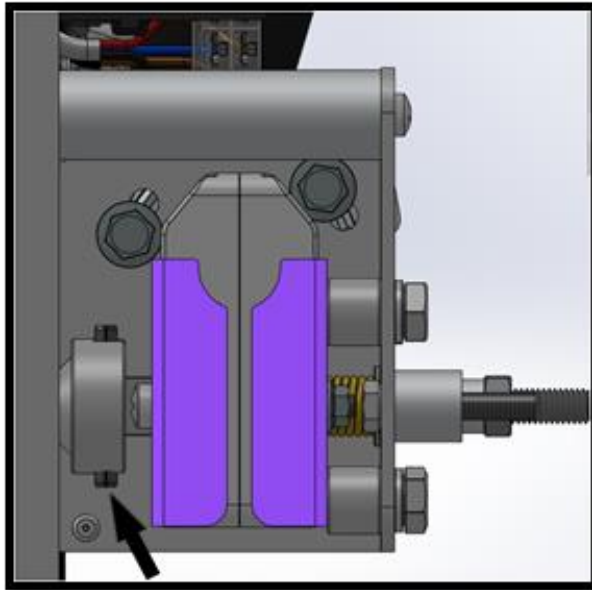


Figure 9 – Alignment of Coupler/pins

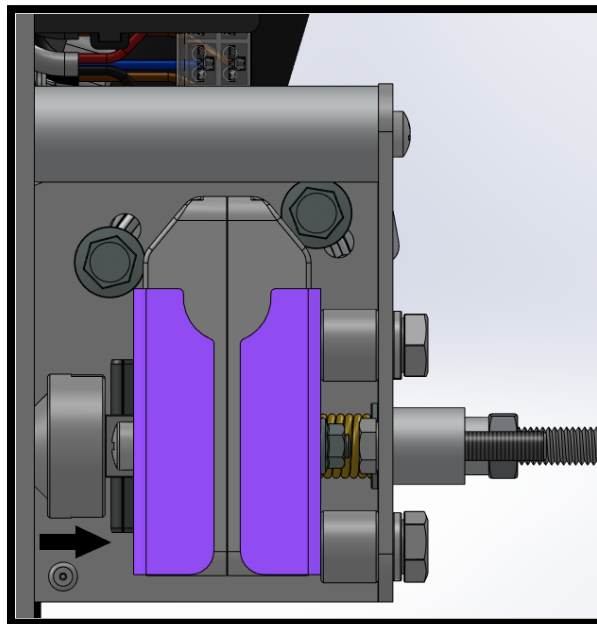


Figure 10 – Disengaged motor.

When the pin is removed (figure 10) replace it using spare parts LCI (P/N 2020341589) being careful to place the two elastic pins in a opposing way (figure 11).

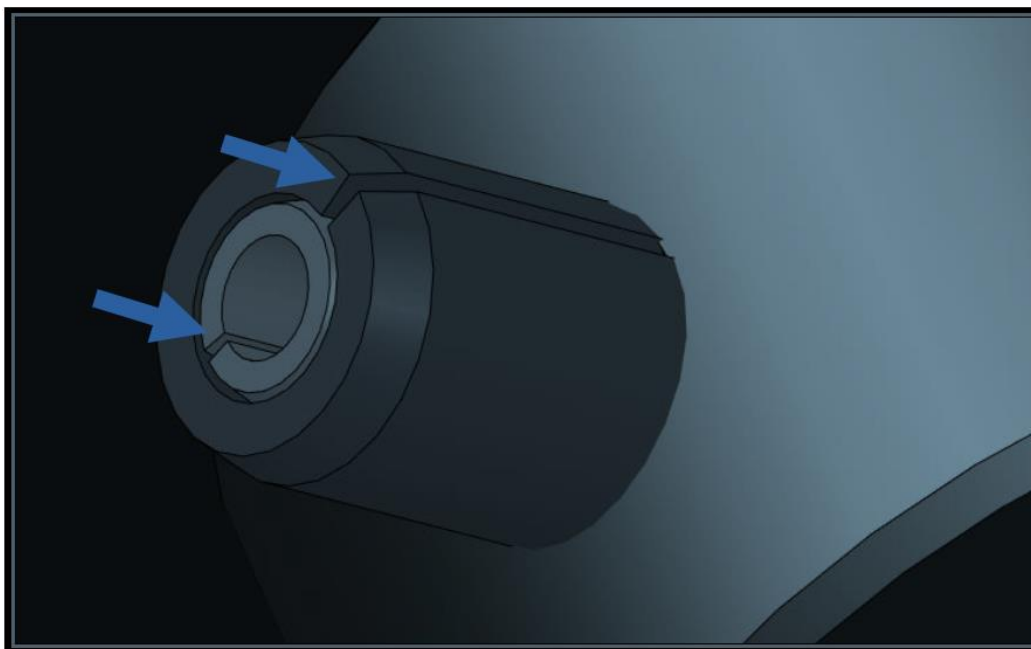


Figure 11 – Correct position of elastic pins.